

CardAccess Working Modes

The CardAccess main screen has two working modes. They are:

- Monitor and
- Status

The main screen switches itself between monitor and status modes by clicking a button on the toolbar. This button will be labeled *Monitor/Status* depending on the current mode of the screen.

Monitor mode

By default, the CardAccess main screen is set to *Monitor* mode. In this mode, the screen displays the events and alerts as and when they are gathered from the panels. The monitor screen is divided into two grids that are designed for receiving low and high priority events, based on the settings in the various configuration screens.

CardAccess 3000 (Eastern Daylight Time) - Host PC

System Control Access Administration Configuration Lockdown Control View Help

Personnel... Schedules... Access... Reports... Status... Doors... Relays... Links... Activity Links... NAPCO Panels View DVR Log Out...

Monitor...

Events: Track Respond Map Photo Video Control Previous Page Recent Next Page As Local Time

| Photo | Class | Description | Location | Date |
|-------|---------------|---------------------------------|---------------------|------------------------|
| | SYSTEM | Wireless Socket Server Shutdown | CNTTECH471 | 05/31/2013 11:32:33 AM |
| | SYSTEM | Polling Shutdown by Operator | CNTTECH471 | 05/31/2013 11:36:15 AM |
| | SYSTEM | Polling Startup | CNTTECH471 | 05/31/2013 11:39:30 AM |
| | PANEL TROUBLE | No Response | East Wing - Panel 2 | 05/31/2013 11:39:40 AM |
| | SYSTEM | LAN Port 6: Connection Failed | Host PC | 05/31/2013 11:40:05 AM |
| | SYSTEM | Polling Startup | CNTTECH471 | 06/04/2013 10:26:51 AM |
| | PANEL TROUBLE | No Response | East Wing - Panel 2 | 06/04/2013 10:27:02 AM |
| | SYSTEM | LAN Port 6: Connection Failed | Host PC | 06/04/2013 10:27:28 AM |
| | SYSTEM | Wireless Socket Server Startup | CNTTECH471 | 06/04/2013 10:28:09 AM |
| | SYSTEM | Polling Shutdown by Operator | CNTTECH471 | 06/04/2013 10:44:13 AM |
| | SYSTEM | Wireless Socket Server Shutdown | CNTTECH471 | 06/04/2013 10:44:26 AM |
| | SYSTEM | Polling Startup | CNTTECH471 | 06/04/2013 11:16:23 AM |
| | PANEL TROUBLE | No Response | East Wing - Panel 2 | 06/04/2013 11:16:33 AM |
| | SYSTEM | LAN Port 6: Connection Failed | Host PC | 06/04/2013 11:16:58 AM |
| | SYSTEM | Wireless Socket Server Startup | CNTTECH471 | 06/04/2013 11:17:06 AM |

Pending Alerts Acknowledge Respond Map Photo Video Control

| Class | Description | Loc |
|-------|-------------|-----|
| | | |

Fig. 3.1. CardAccess main screen in Monitor mode.

Please refer the heading [Events Grid](#) and [Alerts Grid](#) for detailed information on CardAccess screen in Monitor mode.

Status mode

Clicking the *Monitor* button on CardAccess toolbar will switch the CardAccess main screen over to *Status* mode. In this mode, the CardAccess screen displays the current status of manually controlled CardAccess system components.

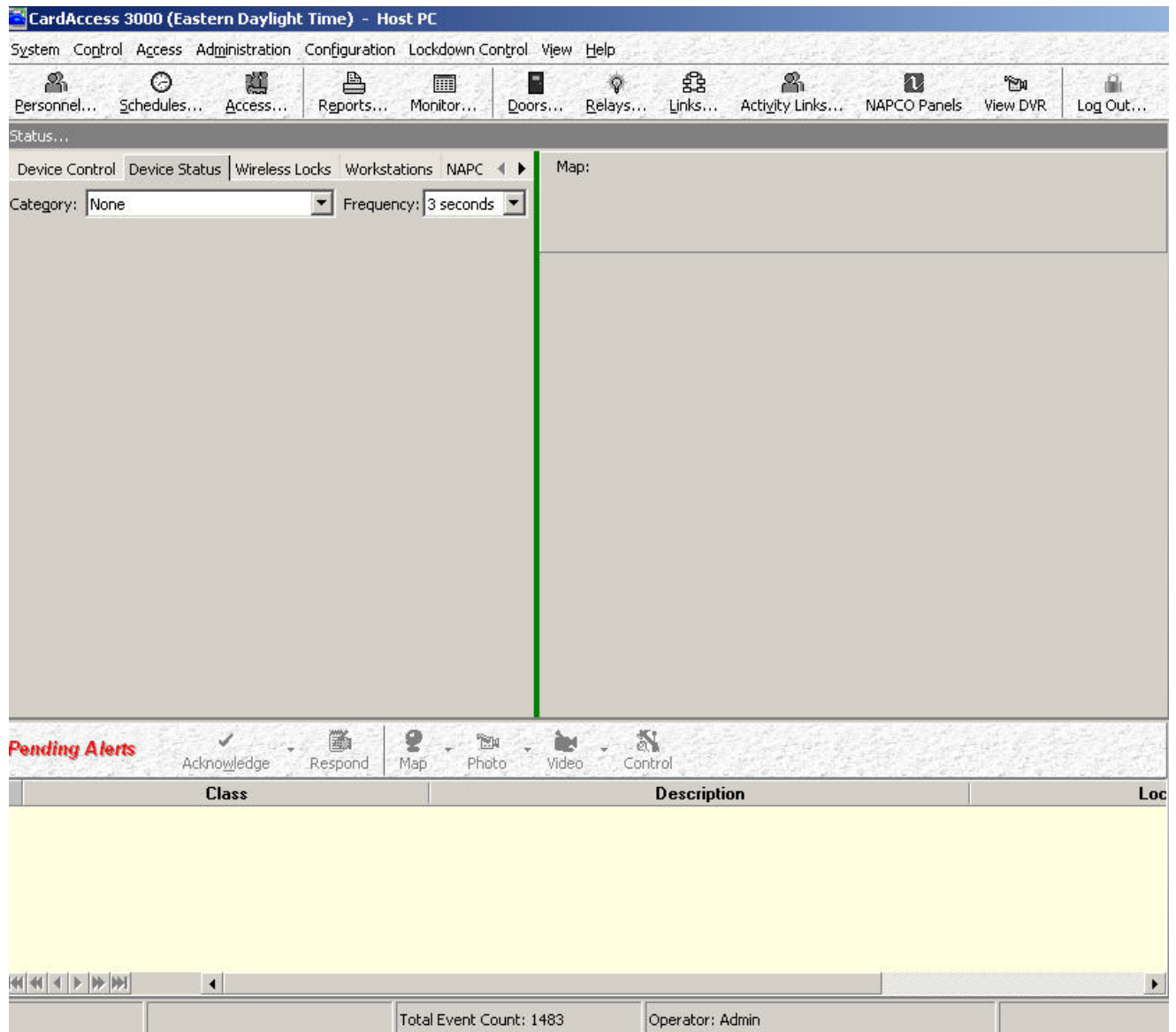


Fig. 3.2. CardAccess main screen in Status mode.

There can be six folder tabs in the Status mode. They are:

1. Device Control- **This tab is seen by default.**
2. Device Status- **This tab will be seen only when the *Use Facility Maps* checkbox is selected in the ‘System Settings’ screen.**
3. Wireless Locks – **This tab will display all the wireless locks configured.**
4. Workstations- **This tab will display a list of all the workstations and their status.**
5. NAPCO Status- **This tab is seen only if the *Use NAPCO Panels* checkbox is selected in the ‘System Settings’ screen.**
6. LOCKDOWN Status- **This tab is seen only if the *Use NAPCO Panels* checkbox is selected in the ‘System Settings’ screen.**

The tabs are explained below.

Device Control Tab

The Control tab of Status screen will display a listing of all enabled hardware devices in the CardAccess system. A click on the Control tab will show three collapsed items namely *Doors*, *Relays* and *Links* in the *Controlled Equipment* area seen in the left half of the screen.

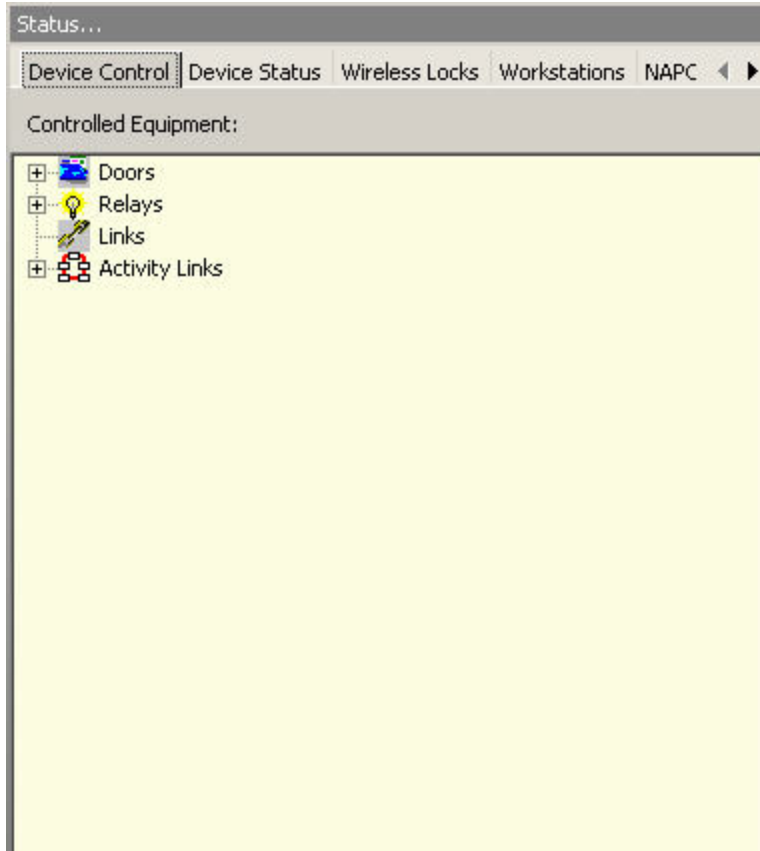


Fig. 3.3. Status screen in Device Control tab.

The items Doors, Relays, Links and Activity Links contain a listing of the enabled active Doors, Relays, Links and Activity Links respectively in the CardAccess system. The list of enabled hardware devices can be seen by clicking on the corresponding nodes (+ sign). An item that does not have any enabled device will not display the node. In the figure below, Doors node is expanded to show the list of the enabled Doors.

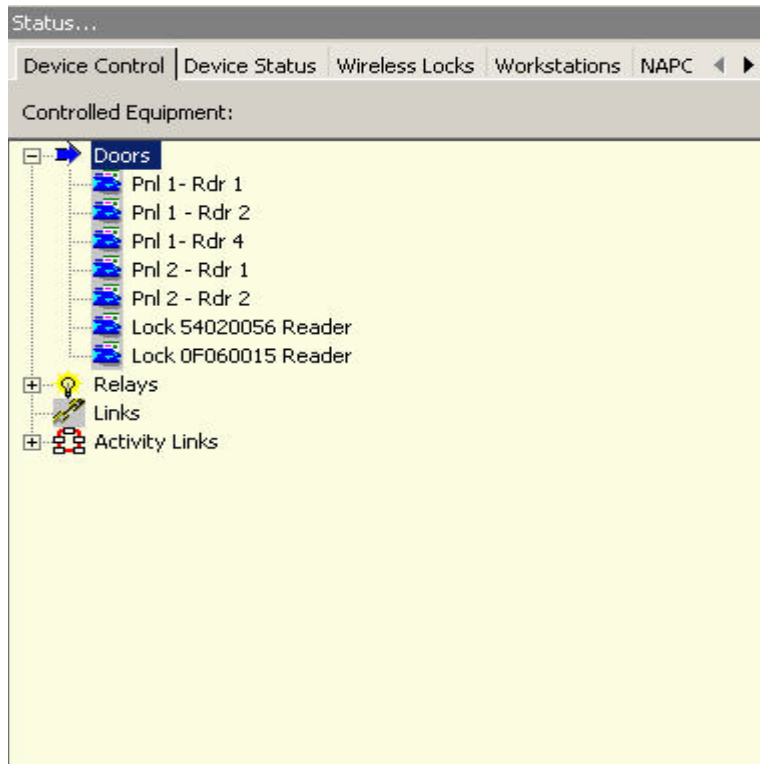


Fig. 3.4. List of doors displayed by clicking on Doors node.

In the above figure, the Links have no enabled devices and hence they do not display nodes.

Double clicking on any Door, Relay, Link or Activity Link will open up the manual control screen of the concerned hardware device.

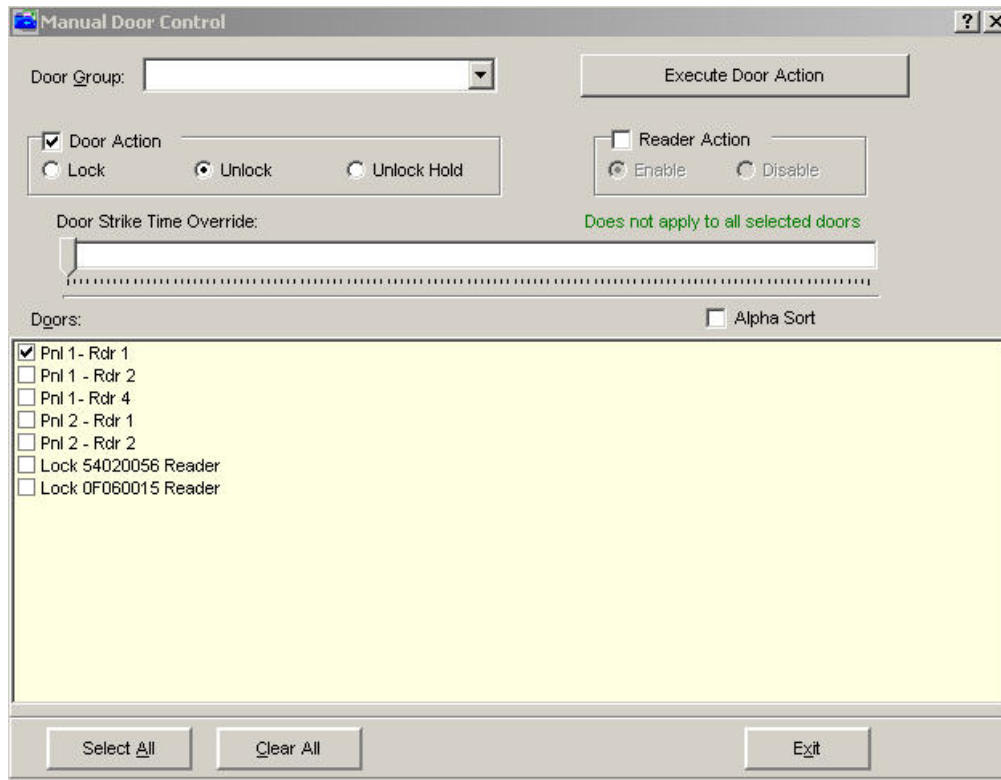


Fig. 3.5. Manual Door Control screen opened by double clicking the 'Pnl 1-Rdr 1' door item in figure 3.4.

Note: The Manual Door/Relay/Link/Activity Links Control screens can also be opened by clicking the Door/Relay/Link buttons respectively on the CardAccess toolbar.



Fig. 3.6. Doors, Relays, Links buttons in CA tool bar used for opening manual control screens.

The *Map* area seen on the right half of Status screen (see figure below) is reserved for displaying the bitmap of the device highlighted in the Controlled Equipment area. But, it is necessary that the highlighted device has a static

bitmap stored in its hardware configuration record. If the highlighted device has no bitmap stored, the Map area will remain blank.



Fig. 3.7. Map area on the right showing bitmap of Third Floor Emergency Stairwell device highlighted on the left.

Device Status Tab

The Device Status tab displays the current operational status (such as Open/Closed, Normal/Abnormal etc) of all enabled hardware devices (such as doors, inputs, relay, links) in the CardAccess system.

A click on the Device Status tab will show the default selection *None* in the Category field. The options available in the Category field allow filtering of the status screen display to show only those hardware items that match the selected Event type. The available options can be seen by clicking the down

arrow of the field. Selecting an option in the list will display the columns *Panels*, *Device*, *Status*, *Last Change* and *Number* under the *Category* field.

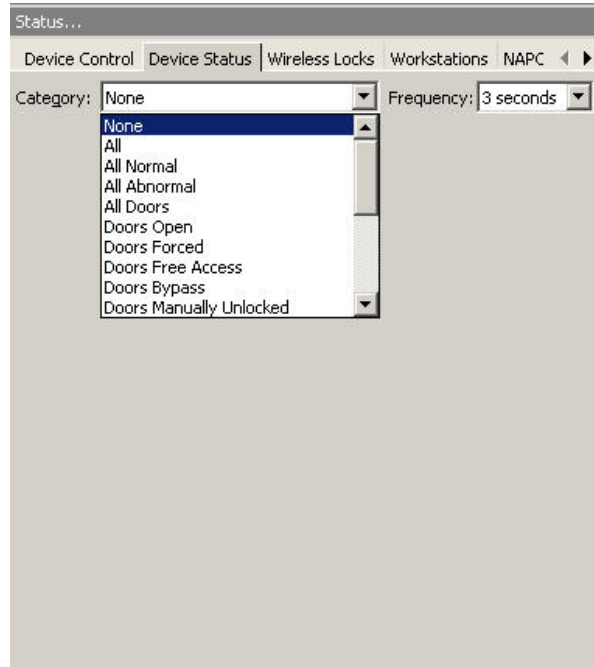
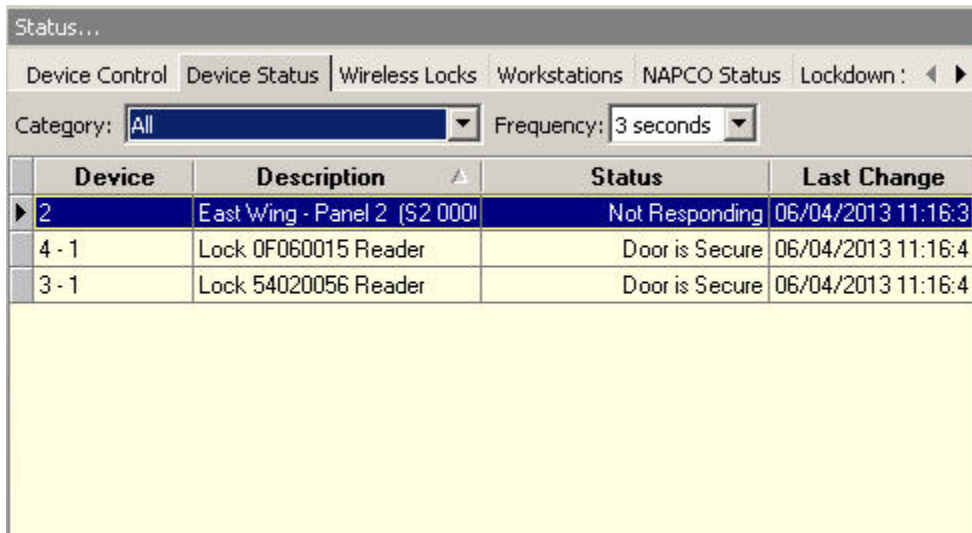


Fig. 3.8. Options in **Category** field displayed by clicking the down arrow.

A screenshot of the "Status..." dialog box, showing the "Device Status" tab. The "Category:" dropdown is set to "All". Below the controls is a table with the following data:

| | Device | Description | Status | Last Change |
|---|--------|------------------------------|----------------|--------------------|
| ▶ | 2 | East Wing - Panel 2 (S2 000) | Not Responding | 06/04/2013 11:16:3 |
| | 4 - 1 | Lock 0F060015 Reader | Door is Secure | 06/04/2013 11:16:4 |
| | 3 - 1 | Lock 54020056 Reader | Door is Secure | 06/04/2013 11:16:4 |

Fig. 3.9. Status screen in **Device Status** tab with the options 'All' selected in the **Category** field.

The options available in the Category field are explained below.

1. *None*: Selecting this option will not display any hardware device in the status screen. This is the default selection.
2. *All*: Selecting this option will show all enabled hardware devices.
3. *All Normal*: Selecting this option will show all devices that are not in an abnormal state.
4. *All Abnormal*: Selecting this option will show all devices that are in an abnormal state.
5. *All Doors*: Selecting this option will display only doors that are in normal or abnormal states.
6. *Doors Forced*: Selecting this option will show only doors that are currently in a forced door state.
7. *Doors Free Access*: Selecting this option will show only doors that are currently in free access state.
8. *Doors Bypass*: Selecting this option will show only doors that have been bypassed.
9. *Doors Manually Unlocked*: Selecting this option will show only doors that have been unlocked using the manual door control screen (and are currently being held unlocked).
10. *Doors Manually Locked*: Selecting this option will show only doors that have been locked using the manual door control screen.
11. *Doors Disabled (Manual Mode)*: Selecting this option will show only readers (doors) that have been disabled using the manual door control screen.
12. *Doors Disabled (Schedule)*: Selecting this option will show only readers that are currently disabled by a time schedule.
13. *All Inputs*: Selecting this option will show all enabled input devices only.
14. *Abnormal Inputs*: Selecting this option will show only input devices that have reported *input abnormal*.

15. *Supervised Trouble*: Selecting this option will show only abnormal supervised input devices.
16. *Inputs Schedule Disabled*: Selecting this option will show only inputs that have been disabled by a time schedule.
17. *Activated Relays*: Selecting this option will show only relays that are currently energized (latched).

Selecting any of the above options will display the following columns:

- *Panel*: This column will display the panel number of the panel that is hosting the connected hardware device. The panel number is taken from the *PnlNo* field of the Panels screen.
- *Device*: This column will display the name of the hardware device. This name is taken from the *Name* field in the Panels, Readers, Relays, Inputs or Links screens.
- *Status*: This column will display the current status of the connected hardware device. The message displayed is related to the type of the device.
- *Last Change*: This column will display the date and time of the most recent change in status of the indicated hardware item.
- *Number*: This column will display the number of the hardware item, in the list of items, in the configuration screen where the item is mentioned. For example, if a door is mentioned on the Status tab, the number of the door record in the Readers screen is mentioned in the *Number* field. Thus, you have the panel number that the device is connected to in the *Panel* field and you have the reader number (as found in the *Reader* field for the Readers screen). With this information, you can easily locate the configuration record of a hardware device.

Wireless Locks Tab

A click on the Wireless Locks tab will show the status of all configured Gateways and Wireless locks.

Workstations Tab

A click on the Stations tab will show a listing of all CardAccess workstations that are currently connected to the CardAccess database and also of the operators who are currently logged in.

| Station | Name | Logged On | Operator | Time |
|-------------|---------------|-----------|--------------|-----------------------|
| ▶ Master | CNTTECH471 | Yes | Admin (Srvr) | 06/04/2013 2:48:37 PM |
| Master Comm | CNTTECH471 | Yes | | 06/04/2013 2:56:23 PM |
| Wrk 1000 | 192.168.1.213 | Off Line | admin | 12/28/2012 4:58:25 PM |

Fig. 3.10. Status screen in Workstations tab.

The columns seen in Workstations tab are explained below.

- *Station:* The *Station* column will contain the workstation number or name of every CardAccess workstation (and host), that is currently connected to the CardAccess database. In figure 3.10 above, there are two entries, marked *Master* and *Master Comm*. These entries refer to the Host PC and the two software components *Host user screen (Master)* and the *Communications Server (Master Comm)* that run on the Host PC.
- *Name:* The *Name* column will display the name of the operator who is currently logged in to the highlighted workstation. The name displayed in this field is taken from the *Name* field of the operator record, in the Operators configuration screen.
- *Logged On:* The '*Logged on*' column will denote whether the highlighted workstation is currently logged into the CardAccess system and if it is actively accessing the CardAccess database. *Yes* indicates that the workstation is active and *No* indicates that the user has logged off.
- *Operator:* The '*Operator*' column will display the screen name of the operator who is currently logged into the highlighted CardAccess workstation. The screen name is taken from the *Screen Name* field of the Operators screen.
- *Time:* The *Time* field will denote the time at which the indicated operator logged into the CardAccess database.

NAPCO Status Tab

The NAPCO Status tab can be used to check the Arm/Disarm status of NAPCO Areas in the CardAccess system. Please refer the section titled [NAPCO Alarm Panel Integration with CardAccess 3000](#) for details on this tab.

LOCKDOWN Status Tab

The LOCKDOWN Status tab can be used to check the status of First-In Areas and Lockdown Areas.

